

ICAO Low Intensity Obstruction Light Type B

Complete Light Assembly AV-OL-ILAB-12-R Type 1 & Type 2

Avlite
www.avlite.com



AUTHORISED DISTRIBUTOR

Features

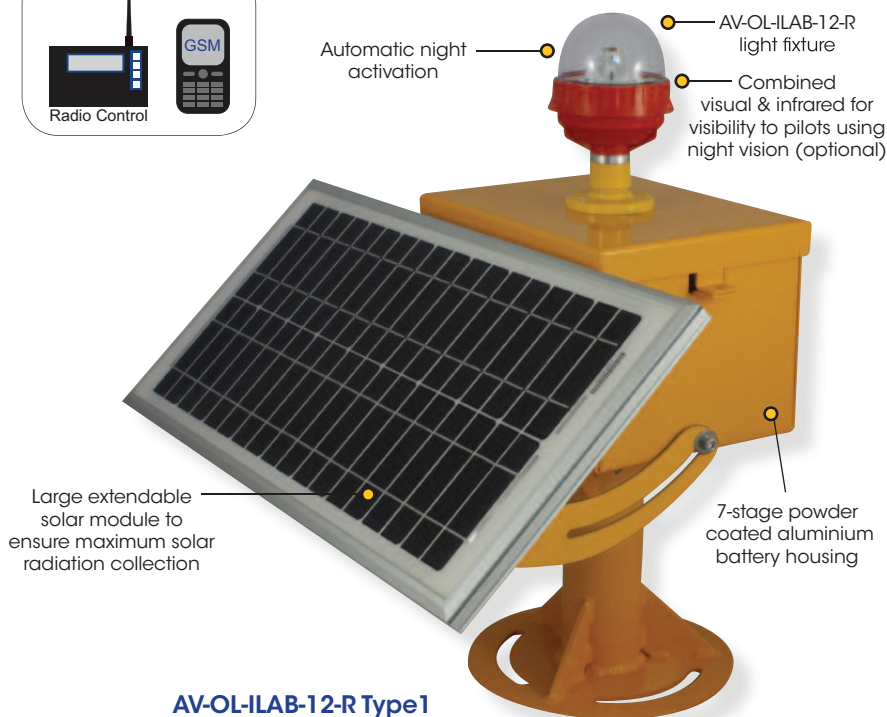
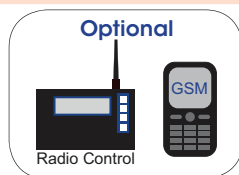
- Cost effective, energy efficient obstruction lighting solution
- Integrated solar/battery system
- Available in two power supply sizes to suit various locations
- Light sensor for day/night operation
- LED technology reduces maintenance time and costs
- Optional combined visual/IR for pilots using NVG
- Optional RS422/485 communications port for monitoring DC version

Applications

- ICAO LIOL B for marking obstacles that do not exceed 45 metres in height

Compliance

- Low Intensity Type A & B Obstruction Light, ICAO Annex 14 Volume 1, 'Aerodrome Design and Operations', Fourth edition July 2004, table 6.3



AV-OL-ILAB-12-R Type1

Avlite's low intensity LED obstruction light complete assembly is a self-contained, solar powered obstruction light designed to comply with ICAO LIOL Type B requirements.

The unit is equipped with a standard AV-OL-ILAB-12-R light-head, and uses a single high intensity LED as a light source. The light fixture is preset to Type B intensity setting (32cd) but can be reduced to Type A (10cd) by the operator if required.

The solar modules charge the battery during daylight hours, and the light automatically begins operation at dusk once the ambient light threshold drops sufficiently.

The assembly is available in two solar/battery configurations to suit a range of installations and ensures years of maintenance-free reliable service.

The obstruction light is also available with combined visual and infrared (IR) for visibility to pilots using night vision.

The solar assembly is also available with dual light fixture for redundant failsafe.

The AV-OL-ILAB-12-R complete light assembly is also available with the following optional features:

Optional GSM Cell-Phone Monitoring & Control

Optional GSM Cell-Phone Monitoring is also available enabling operators to remotely monitor the status of their aviation installations. The system can also be configured to send out alarm SMS text messages to designated cellular telephone numbers. Users can also have alarms and reports sent to designated email addresses.

Optional Radio Control

The complete light assembly is also available with 2.4GHz Radio Control, whereby lights can be operated by a wireless handheld controller enabling personnel to remotely activate the light.

ICAO Low Intensity Obstruction Light Type B

Complete Light Assembly AV-OL-ILAB-12-R Type 1 & Type 2

SPECIFICATIONS* *

Light Characteristics

Light Source
Available colors
Peak Intensity (cd)†
Horizontal Output (degrees)
Vertical Divergence (degrees)
Reflector Type
Intensity Adjustments

Electrical Characteristics

Current Draw (mA)

Circuit Protection
Operating Voltage (VDC)
Temperature Range

Solar Characteristics

Solar Module Type
Output (watts)
Solar Module Efficiency (%)
Charging Regulation

Power Supply

Battery Type
Battery Capacity (Ah)
Nominal Voltage (V)
Autonomy (nights)

Physical Characteristics

Body Material
Lens Material
Lens Diameter (mm/inches)
Lens Design
Mounting
Height (mm/inches)
Width (mm/inches)
Mass (kg/lbs)
Product Life Expectancy

Certifications

CE
Quality Assurance
Waterproof

Intellectual Property

Trademarks

Warranty *

Options Available

AV-OL-ILAB-12-R

Type 1

As tested AV-OL-ILA-12-R LED & AV-OL-ILB-12-R LED (AV-OL-ILAB-12-R light head)
Red as standard. Other colors available on request, including IR
Complies with ICAO LIOLA & LIOLB 360
As per ICAO Type A/B specification
Single LED Optic
User-adjustable between 10cd & 32cd
>100,000

ICAO LIOL Type A @ 10cd Steady-on with relay energised: I_{max} = 65
ICAO LIOL Type B @ 32cd Steady-on with relay energised: I_{max} = 120
Integrated
12 - 48
-40 to 80°C

Multicrystalline
20
14
Microprocessor controlled

SLA (Sealed Lead Acid)
26
12
Steady-on: >10

7-stage powder-coated aluminium
LEXAN® Polycarbonate - UV stabilized
100 / 3 7/8
Single LED Optic
200mm bolt pattern
606 / 23 7/8
656 / 25 3/4
30.5 / 67 1/4
Up to 12 years

EN61000-6-3:1997. EN61000-6-1:1997
ISO9001:2008
IP67

AVLITE® is a registered trademark of Avlite Systems
3 year warranty
• Radio Controlled
• GSM Cell-Phone Monitoring
• IR LED
• RS422/485 communications port
• Dual light fixture
Note: power supply not suitable for operating in a Type B dual fixed-on configuration. Consult Avlite for solar power supply options

AV-OL-ILAB-12-R

Type 2

As tested AV-OL-ILA-12-R LED & AV-OL-ILB-12-R LED (AV-OL-ILAB-12-R light head)
Red as standard. Other colors available on request, including IR
Complies with ICAO LIOLA & LIOLB 360
As per ICAO Type A/B specification
Single LED Optic
User-adjustable between 10cd & 32cd
>100,000

ICAO LIOL Type A @ 10cd Steady-on with relay energised: I_{max} = 65
ICAO LIOL Type B @ 32cd Steady-on with relay energised: I_{max} = 120
Integrated
12 - 48
-40 to 80°C

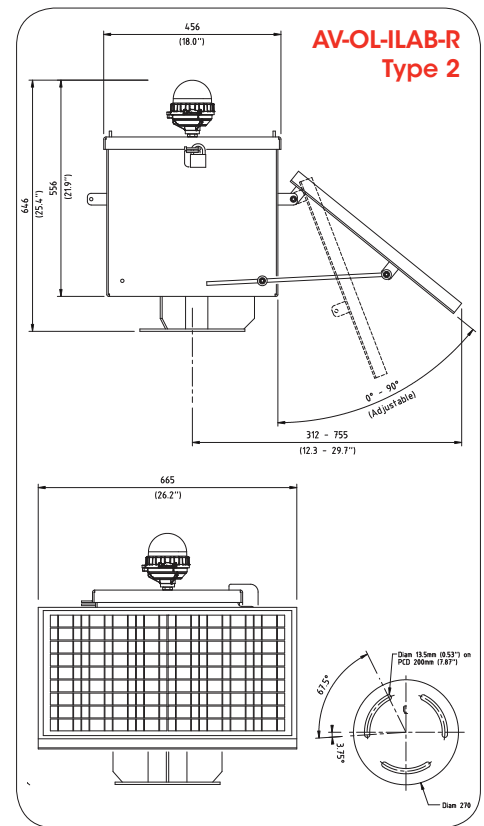
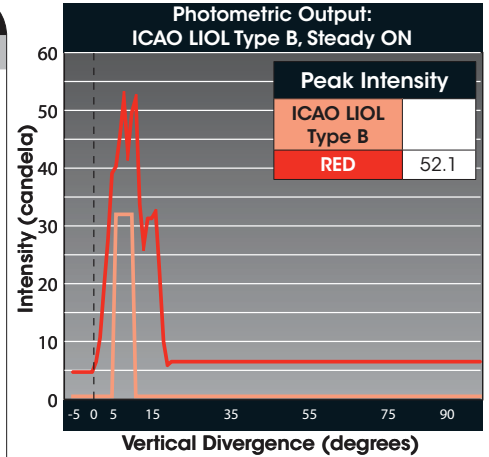
Multicrystalline
40
14
Microprocessor controlled

SLA (Sealed Lead Acid)
55
12
Steady-on: >20

7-stage powder-coated aluminium
LEXAN® Polycarbonate - UV stabilized
100 / 3 7/8
Single LED Optic
200mm bolt pattern
646 / 25 1/2
665 / 26 1/4
55.5 / 122 1/4
Up to 12 years

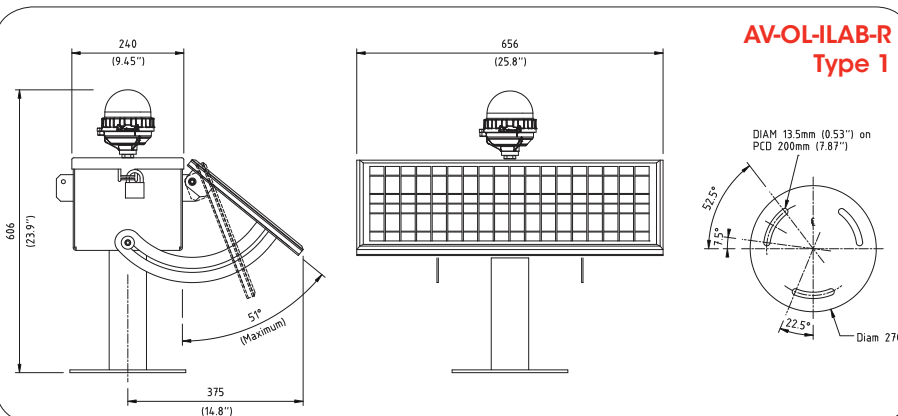
EN61000-6-3:1997. EN61000-6-1:1997
ISO9001:2008
IP67

AVLITE® is a registered trademark of Avlite Systems
3 year warranty
• 100Ah battery
• 60watt solar module
• Radio Controlled
• GSM Cell-Phone Monitoring
• IR LED
• RS422/485 communications port
• Dual light fixture



HOW TO ORDER

AV-OL-ILAB-12-[?]-[?]-[?]
Product No.: _____
Model: _____
 12 = 12-48 VDC
Color: _____
 R = Red
 IR = Infrared
 RIR = Combined Red/IR
Solar/Battery Configuration: _____
 CT1 = Type 1
 CT2 = Type 2
Monitoring & Control: _____
 G = GSM
 RF = Radio Control
 [blank] = No Monitoring & Control



* Specifications subject to change or variation without notice
 † Subject to standard terms and conditions
 ‡ Intensity setting subject to solar availability

